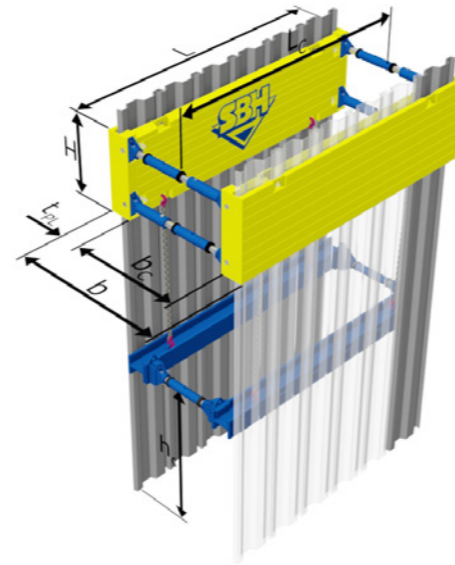


## PILE CHAMBER SHORING 400 series

This system combines shoring plates and sheet piles. The pile chamber element creates the guiding frame for the sheet piles, and at the same time serves as the top waler.

- ▶ Sheet piles are pressed in by the excavator, ahead of the excavation
- ▶ Working width adjusted by means of SBH spindles and extension pipes
- ▶ Thanks to welded side parts, the pile chamber plate can also be used in slide rail shoring
- ▶ Standard sheet piles KD 6/8, also for other profiles upon request



### PILE CHAMBER PLATES $h = 1.00$ m

Plate length $L_{PCE}$ [m]	Pipe clearance length $L_c$ in PCE [m]	Number of KD 6/8	Inner plate thickness $t_{PI}$ [mm]	Permitted boom bracing load $q$ [kN/m]	Weight per plate without/with guide [kg]
1.90	2.00	3	120.00	261.2	470.0 / 505.0
2.34	2.44	4		171.6	560.0 / 595.0
2.84	2.94	5		116.6	660.0 / 695.0
3.42	3.52	6		80.4	775.0 / 810.0
3.92	4.02	7		61.2	875.0 / 910.0
4.42	4.52	7	170.00	116.8	1325.0 / 1360.0
4.92	5.02	8		94.3	1470.0 / 1505.0
5.42	5.52	9		77.7	1605.0 / 1640.0
5.92	6.02	10		65.2	1750.0 / 1785.0

Other lengths or custom variants upon request.

### SPINDLE TYPE 031/085 BLUE

Number of extension pipes each 0.50m	Working width $b_c$ between the Piles [m]	Inner plates [m]	Reinforced inner plate [m]	Trench width $b$ [m]	Permissible compressive force [kN]	Weight total [kg]
0	1.00 – 1.28	0.76 – 1.04	0.66 – 0.94	1.30 – 1.58	468.0	65.0
1	1.50 – 1.78	1.26 – 1.54	1.16 – 1.44	1.80 – 2.08	403.0	84.8
2	2.00 – 2.28	1.76 – 2.04	1.66 – 1.94	2.30 – 2.58	348.0	104.6
3	2.50 – 2.78	2.26 – 2.54	2.16 – 2.44	2.80 – 3.08	299.0	124.4
4	3.00 – 3.28	2.76 – 3.04	2.66 – 2.94	3.30 – 3.58	254.0	144.2
5	3.50 – 3.78	3.26 – 3.54	3.16 – 3.44	3.80 – 4.08	210.0	164.0
6	4.00 – 4.28	3.76 – 4.04	3.66 – 3.94	4.30 – 4.58	165.0	183.8



### ACCESSORIES

You can find the accessory parts

- ▶ Connector post with slide rail guide
- ▶ Spindle key
- ▶ Waler
- ▶ Spring spindle holder socket
- ▶ 4-fold chain with shortening system
- ▶ Stopping pad for pile chamber, extendable

for the Pile Chamber Shoring 400 series on pages 88 – 91.

